

MCM102

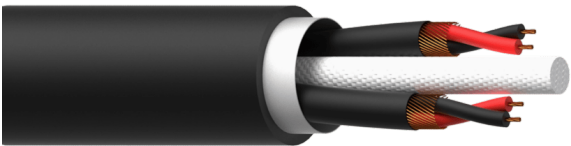
Balanced signal cable - 2 pairs x 0.125 mm² - 26 AWG

Highlights:

- 26 AWG stranded conductors
- Individual jacketed pairs
- Numbered jacket pair identification
- Individual spiral shielding

Product information:

The MCM audio multipair cable is an extremely flexible and rugged type of cable, suitable for indoor and outdoor applications. Each audio pair consists of two insulated and twisted conductors of 0.125 mm² with a high density shielding to prevent any influence of hum, noise or electromagnetic fields from external equipment. Each balanced audio pair has a paper foil packing and an outer PVC jacket of 3.5 mm. All audio pairs are also fitted with a general paper foil packing and a PVC jacket. The PROCAB MCM multipair cable is suited for all kinds of applications such as stagebox connections, live concerts, ...



Inner Conductors:



Shielding:



Product Features:

| | |
|-------------|------|
| Application | null |
| | null |
| Series | null |

Physical Characteristics:

| | | | |
|-----------------|----------------------|----------|----------------------------|
| Inner conductor | Insulation | Material | PE 1.5 mm (Ø) |
| | Shielding | Spiral | BC 32 x 0.12 mm (Ø) (OFC) |
| Outer jacket | Material | | Flexible PVC 3.5 mm (Ø) |
| | Colours | | Black |
| | Material | | Durable PVC 10 mm (Ø) |
| | Colours | | Black |
| Type of cable | | | 26 AWG Stereo signal cable |
| Inner conductor | Material | | BC 7 x 0.15 mm (Ø) (OFC) |
| | Section | | 0.00019 "² |
| | Number of conductors | | 2 (2 pairs) |
| | | | 2 x 2 |
| | Conductor twisting | | Yes |

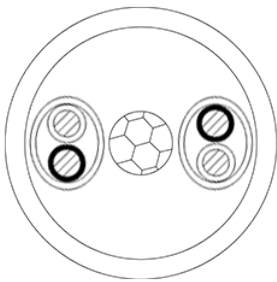
Mechanical Characteristics:

| | | |
|-------------------|---------------------|------------------------|
| Temperature range | Fixed installation | - 104 °F till + 176 °F |
| | Mobile installation | - 77 °F till + 158 °F |
| Bending radius | Fixed installation | 8 x outer diameter |
| | Mobile installation | 10 x outer diameter |

Electrical Characteristics:

| | | |
|-----------------|-------------|----------------------|
| Capacitance | Cond/Cond | 25 pF / m @ 1 kHz |
| | Cond/Shield | 74 pF / m @ 1 kHz |
| Lead resistance | | 13.75 Ω / 100 m |
| Cable Crosstalk | | Min. 73.3 dB / 100 m |

Cross sections:



Variants:

- MCM102/1 - 100 meter