

COP140

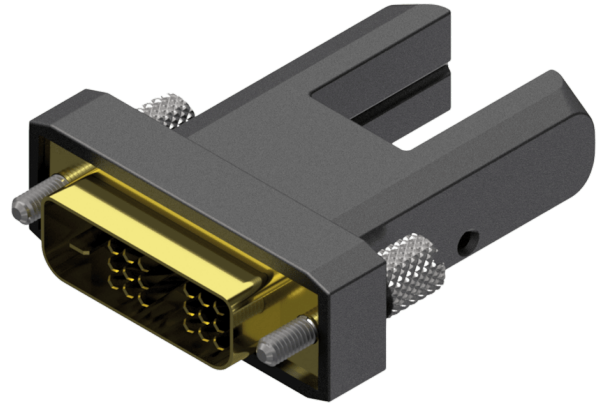
Adapter - HDMI Micro D female - DVI-D male - for use with CLV215A, CLV220A & CLV315A

Highlights:

- Fiber optic technology
- Exchangeable connectors

Product information:

The COP140 is an HDMI Micro D female to DVI-D male straight adapter for use with the CLV215A, CLV220A & CLV315A only. This adapter can transform the connection of an HDMI cable to DVI for monitors, projectors or TV's where only a DVI input is available.



Properties:



Product Features:

Application	null
Series	null