

# CLS215-B2CA

Loudspeaker cable - 2 x 1.5 mm<sup>2</sup> - 16 AWG - EN50399 CPR  
Euroclass B2ca-s1b,d0,a1

## Highlights:

---

- EN50399 CPR Euroclass B2ca-s1b,d0,a1
- 16 AWG (1.5 mm<sup>2</sup>) thin and dense stranded conductors
- Class 5 IEC 60228 compliant

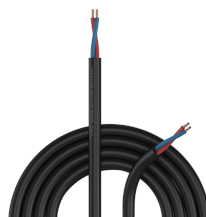
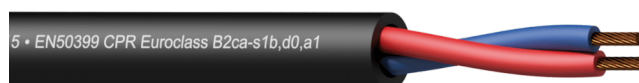
## Product information:

---

The CLS215-B2ca series are 2-core installation loudspeaker cables compliant to the B2ca standards of the Construction Product Regulation (CPR) regarding fire and flammability resistance in fixed installations, minimizing toxic smokes and providing optimal resistance to spreading fire. In addition to its outstanding fire properties, the outer jacket of the cabling is smooth and durable for easy installation and pulling.

The CLS2xx series consists of three models with individually polyolefin isolated conductors in sections ranging from 1.5 mm<sup>2</sup> (16 AWG) up to 4 mm<sup>2</sup> (11 AWG) which are composed of stranded bare copper wires. The stranding keeps the cable flexible and easy to handle. The cable can be used in both indoor and outdoor or in humid environments.

More information about CPR compliant cables? [Click here](#)



## Certification:

---



## Properties:

---



Inner Conductors:



Product Features:

Application	null
Series	null

Physical Characteristics:

Type of cable		2-core loudspeaker cable	
EN50399 CPR Euroclass		B2ca-s1b,d0,a1	
Inner conductor	Material	BC 28 x 0.25 mm (Ø) (OFC)	
	Section	0.0023 "²	
	Number of conductors	2	
Insulation		Material	Polyolefin 3.1 mm (Ø)
Filling		None	
Separator		None	
Inner conductor	American Wire Gauge	16 AWG	
	Insulation	Colours	Red / Blue
	Conductor twisting	Yes	
Outer jacket	Material	Polyolefin 9 mm (Ø)	
	Colours	Black	

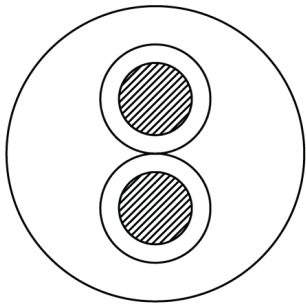
Standards & regulations:

RoHS2 compliant	According EU Directive 2011/65/EU
Reach compliant	According EC 1907/2006
Indoor / outdoor	UV resistant (UL1581, UVA, 720 h)
Smoke emissions	According IEC 61034
Zero halogen compounds	According EN 50267-2-1
	IEC 60754
CPR Euroclass	B2ca-s1b,d0,a1
Flammability test	According EN 60332-1-2

Mechanical Characteristics:

Temperature range	Mobile installation	- 41 °F till + 176 °F
	Fixed installation	- 59 °F till + 176 °F
UV resistant	Yes	

Cross sections:



Electrical Characteristics:

Max. conductor	DC resistance	13.3 (Ω / Km)
Dielectric strength	2 (KV / 1 min. DC)	
Rated voltage	500 V	

Variants:

- CLS215-B2CA/1 - 100 m wooden reel
- CLS215-B2CA/3 - 300 m wooden reel