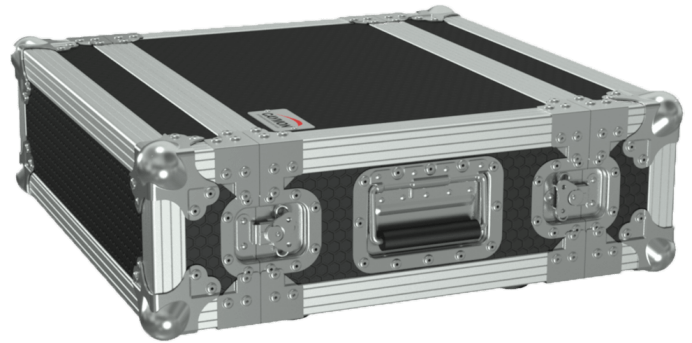


FCMK103

19" flightcase - 3HE - 337 mm depth with foam cover insert

Highlights:

- 315 mm usable depth
- Protects & transports up to 3 units of 19" equipment
- ProShield™ Heavy duty top layer
- High quality 9 mm plywood
- Hardware by Penn Elcom
- Dual perforated rack rail on both sides (MK2 version)
- Accessories storage compartment in both covers
- Pick & pluck foam cover insert



Product information:

The FCMK103 is a professional double cover flight case compliant to the ANSI/EIA RS-310D, DIN41491 and IEC60297 standards for 19" equipment installation which is especially designed for use in combination with wireless microphone systems. The inside usable depth of 315 mm allows installation for all type of wireless microphone receivers, while the both covers are storage compartments of the matching transmitters. The covers are provided with diced pick&pluck foam, allowing customization according to transmitter shape, guaranteeing a shock-proof transportation. The construction is made out of high quality 9mm plywood covered by a ProShield™ top layer, offering optimal protection for your equipment. Both front and back lids are detachable, allowing instant access to both controls and connections of your equipment. Mounting of the equipment can be done using the perforated rack rail with punched square holes for use with snap-in cage nuts, while the dual structure allows installation of horizontal supports for heavy equipment. Superior durability and handling convenience is guaranteed through Penn-Elcom® hardware such as heavy duty ball corners, rivet protected recessed flip handles and MOL™ type butterfly latches.

Product Features:

Dimensions		20.83 x 6.54 x 21.26 " (W x H x D) (excl. rubber feet)
Unit height		3 HE
Tunnel depth		13.39 " (excl. covers)
Max. usable depth		12.40 "
Weight		25.35 lb
Construction		0.35 " high-quality plywood
Finish		ProShield™ top layer
Handles		2 x Medium heavy-duty (Penn Elcom H7154Z)
Latches		4 x Small (L903/7336Z)
Accessories	Optional	KM500 - M5 Cage nuts
		KS500 - M5 x 16 mm bolt DIN7985 Black
		KM600 - M6 Cage nuts
		KS600 - M6 x 16 mm bolt DIN7985 Black
		BSFxxx - 19" blind panels (1 to 6U)
		BSVxxx - 19" ventilated blind panels (1 to 6U)