

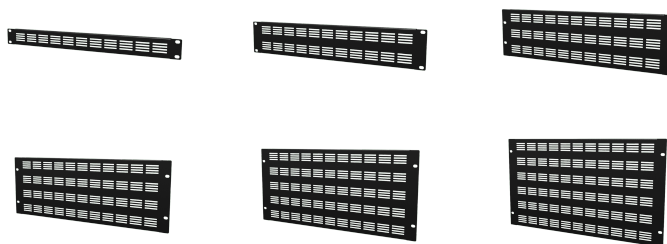
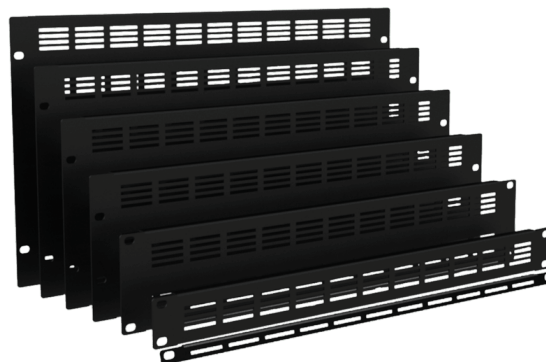
# BSV Series

19" ventilated blind panel

## Product information:

---

A 19" blind panel made of steel with a plate thickness of 1.5 mm and provided with a black (RAL 9004) structured powder coating. The panel is perforated with ventilation holes to help cool the stored equipment.



Product Features:

Dimensions	19.016 x 0.56 x 0.39 " (W x H x D) (BSV003)
	19.016 x 1.72 x 0.39 " (W x H x D) (BSV01)
	19.016 x 3.47 x 0.39 " (W x H x D) (BSV02)
	19.016 x 5.22 x 0.39 " (W x H x D) (BSV03)
	19.016 x 6.97 x 0.39 " (W x H x D) (BSV04)
	19.016 x 8.72 x 0.39 " (W x H x D) (BSV05)
	19.016 x 10.47 x 0.39 " (W x H x D) (BSV06)
Weight	0.20 lb (BSV003)
	0.49 lb (BSV01)
	0.88 lb (BSV02)
	1.23 lb (BSV03)
	1.54 lb (BSV04)
	1.94 lb (BSV05)
	2.12 lb (BSV06)
Unit height	0.33 HE (BSV003)
	1 HE (BSV01)
	2 HE (BSV02)
	3 HE (BSV03)
	4 HE (BSV04)
	5 HE (BSV05)
	6 HE (BSV06)

Variants:

- BSV003 - 0.33 units
- BSV01 - 1 unit
- BSV02 - 2 units
- BSV03 - 3 units
- BSV04 - 4 units
- BSV05 - 5 units